

EAST COAST HOME+DESIGN

CONNECTICUT | NEW JERSEY | NEW YORK

The Amazing *Transformations* Issue



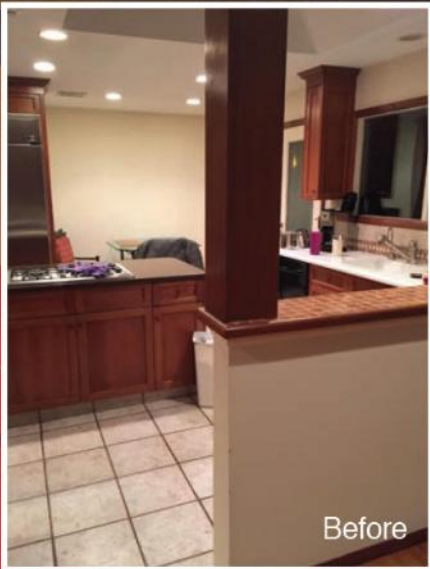
\$5.95 US



07



0 74470 23559 0



Before

HEMINGWAY CONSTRUCTION



The theme of this renovation could easily be: Let There Be Light. The owners of this Stamford, CT, home were tired of their dark, walled-off kitchen it didn't feel connected to the rest of the house, making it difficult to entertain. The owners wanted a modern look with warmth and timelessness, cabinetry with clean lines, and a lot of light. Peter Sciarretta and Doug Horn of Greenwich-based Hemingway Construction have transformed the kitchen into an oasis of light and openness that connects the interior to the exterior, and layers textures, such as porcelain, wood, granite, and metal, into a seamless space. The design breathes new light and life into the entire home because the kitchen now flows into the rest of the house.

"It's now a beautiful space that works for this couple," says Peter, CEO of Hemingway Construction. "The client is a true cook and spends a lot of time at the center island, so we designed the kitchen around that as we opened it up. Because people gather in the kitchen, we added a side-bar peninsula where guests can sit and socialize with her while she is preparing food without feeling like the area is too crowded. She now has a chef-appropriate space to work."

An oversized, remote-controlled, single-pane skylight and a two-panel sliding glass door that leads to the terrace and pool now flood the kitchen with natural light. There is also an abundance of recessed and backlighting under and behind the cabinets.

One of the project's greatest successes, according to Peter, is the cabinetry by Sterling Custom Cabinetry. "The owners wanted cabinets that weren't too dark or too light, so we had them custom made and hand painted. We tried several stain samples, found the right one, and created a streaking effect with vertical, textured lines," Peter explains. "They loved the perfect palette of warmth



Before



Before

that came out of that process.” The cabinets are three-quarter-inch walnut slip matched with flat slab doors. Steel extrusions serve as cabinet pulls, and complement the stainless steel appliances. A Bosch dishwasher, Wolff gas ovens and cooktop, and a large undermount stainless-steel sink complete the look.

Remaining true to the theme of modern warmth, 3-inch-thick Absolute Black granite countertops add yet another texture to the overall space. The countertops are brushed and flamed to look like leather or fabric, but are virtually indestructible and maintenance free. The black counters tie into the black glass fronts of the Wolff ovens for the overall effect. The backsplash is handmade, textured, stacked subway tile that pulls the whole modern vibe together in a layering effect.

The flooring is made of 12 x 48-inch porcelain planks that look like a pale wood. The design creates the warmth and look of a hardwood floor, yet unlike hardwood, it’s very easy to clean and practically indestructible. The pale color lightens up the space

and reflects the natural light.

There were a few things the couple wanted to keep they liked having a breakfast alcove. So, Peter and Doug designed a hutch with backlit single-glass panes at the back of the kitchen near the new sliding glass door that left enough room for a small table and chairs. Now that they can have their coffee with a view, the homeowners love the space even more.

KITCHEN DESIGN

Hemingway Construction

Peter Sciarretta

Doug Horn

115 Mason Street # 2

Greenwich, CT 06830

203.625.0566

hemingwayconstruction.com

